

Masterclass

15:00 - 16:00 | Track 1 | Clases magistrales

2ª Planta



Sr. Arizmendi
EMEA Principal SSA

**¿Qué es el edge?
Retos que plantea**

**#livingontheedge
#theedgechallenge**



Sr. Prada
Local Senior SSA

**Aplicaciones
multi-cluster con
OpenShift**

**#multiclusterispossible
#openshift #kubernetes**



Sr. Boubeta
Local Partner SA

**GitOps más allá de
Kubernetes**

**#beyondkubernetes #gitops
#automation**



Sr. Ferrari
EMEA Senior SSA

**Movimiento
inteligente de datos
entre sedes**

**#masterthedata #datainmotion
#capturedatachange**



Connect

Edge Computing by examples

A different introduction to edge computing

Luis Javier Arizmendi Alonso

Principal Edge Computing Specialist Solution Architect

Formal definition of Edge Computing



*Edge computing is a **distributed computing** paradigm that **brings computation** and data storage **closer to the sources of data.***

Let's make this presentation
more attractive



A close-up photograph of a person's hand holding a small white card. The card has a thick red border and the words "FREE" and "SAMPLES" printed in a bold, red, serif font. The person holding the card is out of focus in the background, wearing a dark top. The background is a soft, out-of-focus brown.

**FREE
SAMPLES**

Customer use case **example 1**

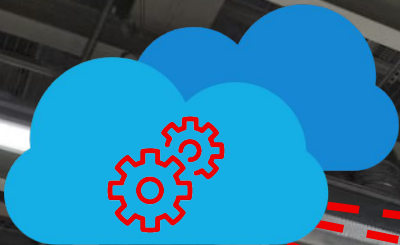
“““

We would like to **automate defect detection** in our products **during the manufacturing** process at the factory production line.

That will help us to **prevent production delays, reduce costs and improve customer satisfaction.**

Mrs. Customer













Edge computing



Customer use case **example 2**

“““

We need to monitor our remote systems and **react modifying the operation** if it's needed **depending on multiple factors.**

That will help us to **maximize operational efficiency, prevent issues and reduce maintenance costs.**

Mr. Customer



Image by American Public Power Association (unsplash.com)



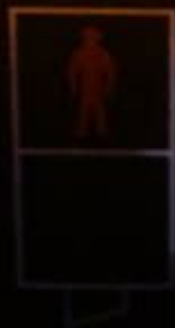




PEDESTRIANS
push button and wait
for signal opposite

WAIT

wait



cross
with care





Edge computing



Customer use case **example 3**

“““

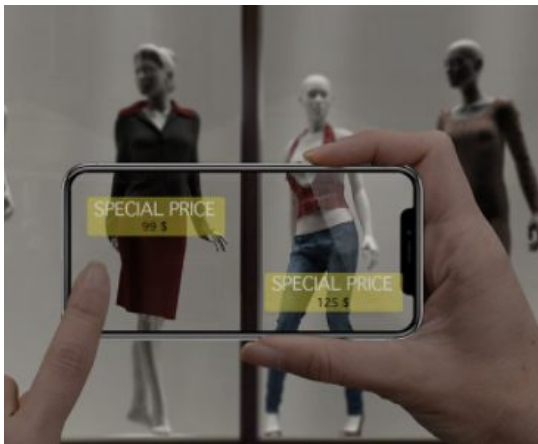
We must **modernize our business** with **new attractive services** that engage our customers independently where they are buying our products.

That will help us to **differentiate from competitors, enhance customer experience and increase our sales.**

Mr. Customer



Some ideas for retail stores...



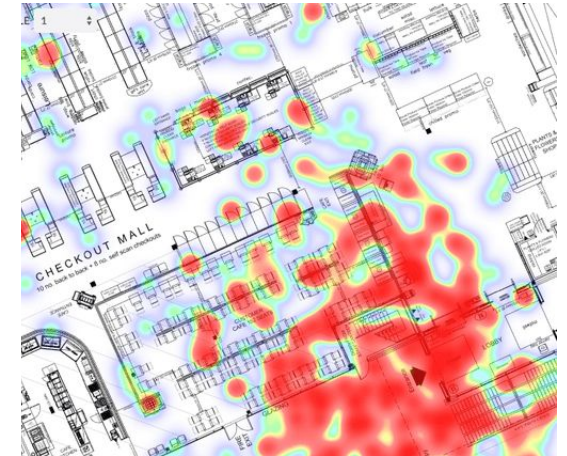
**Augmented reality and
in-store suggestions**



**Smart stock
management**



Virtual fitting rooms



Customer tracking



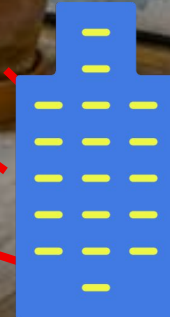
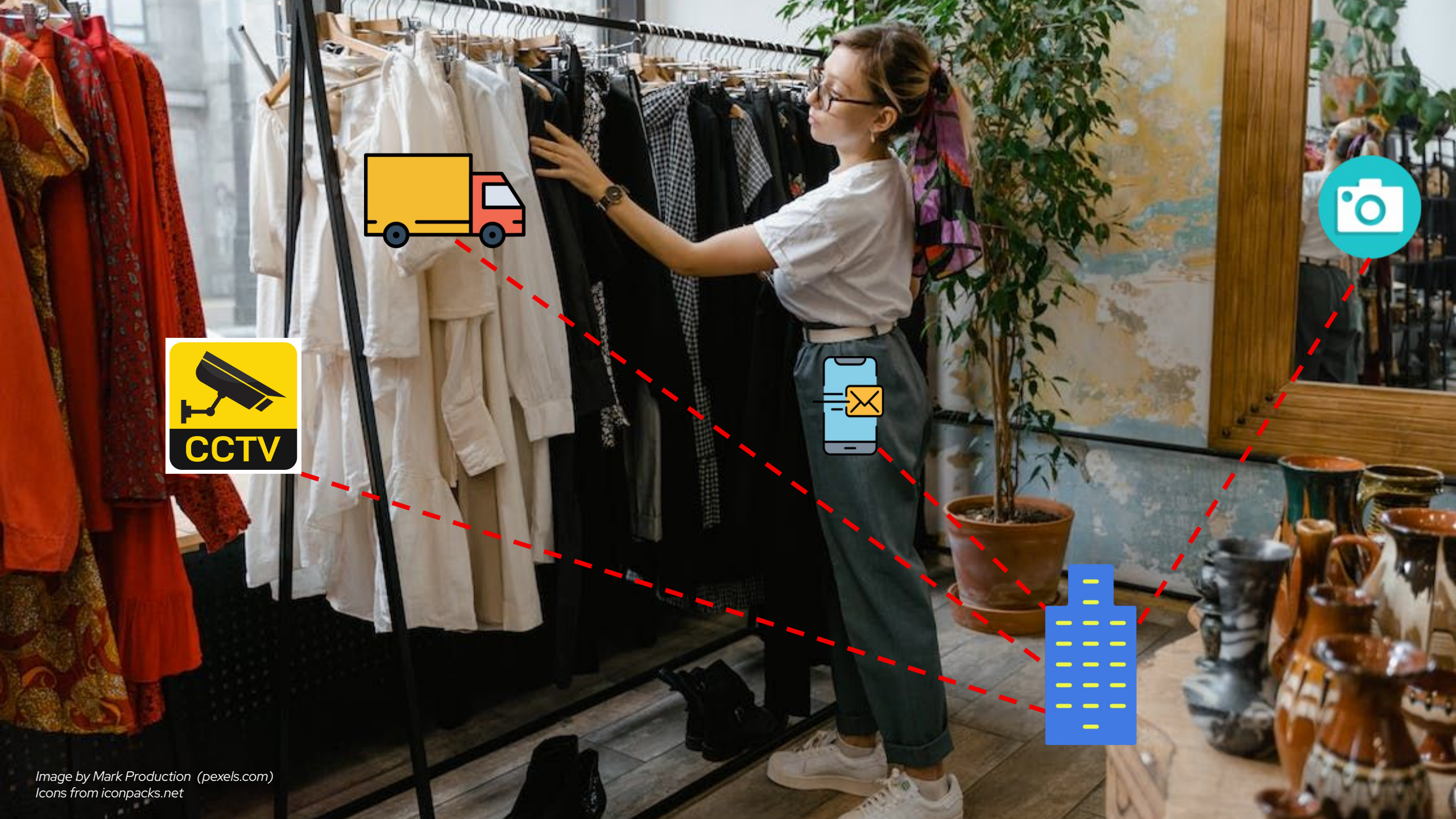
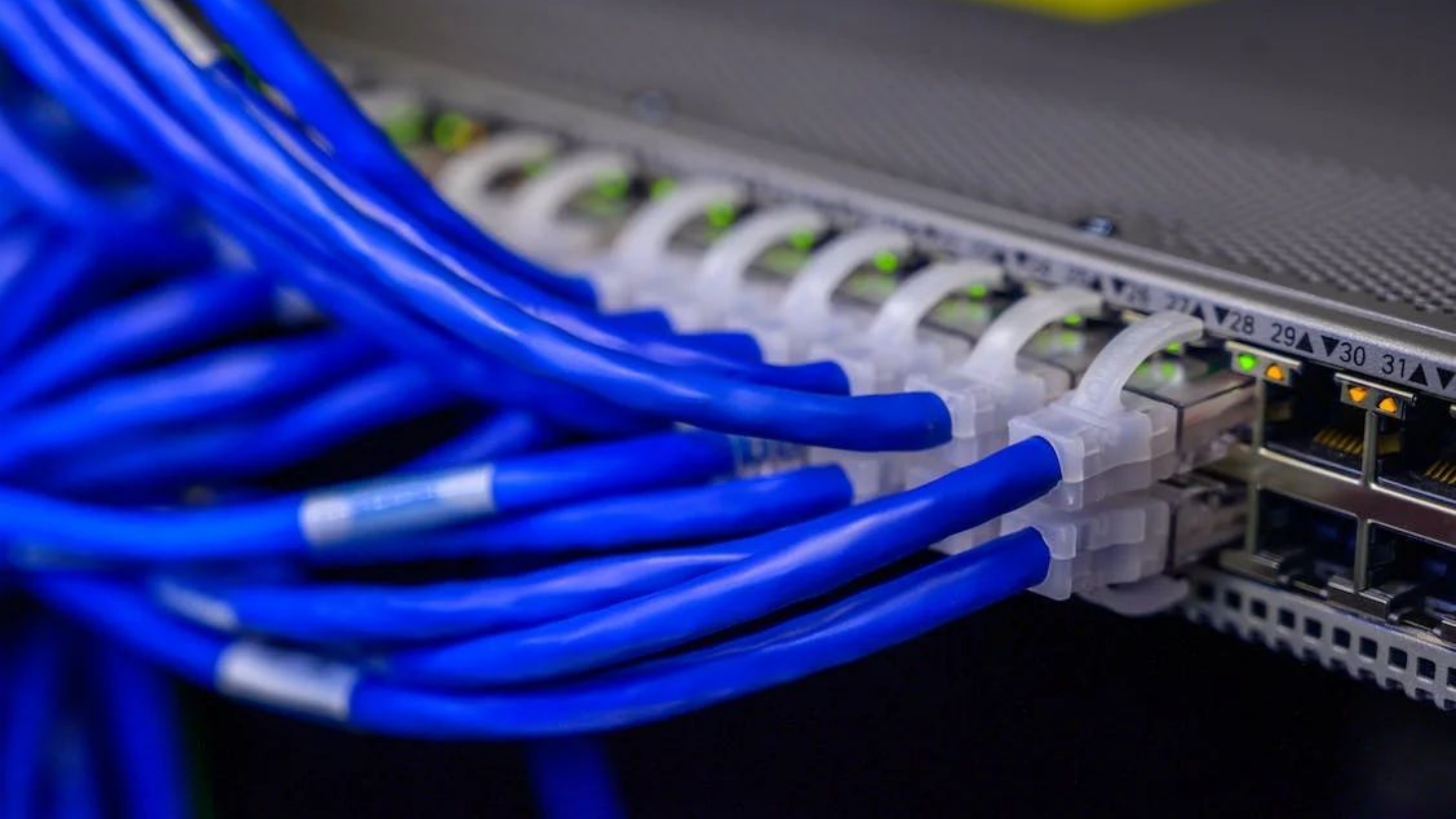




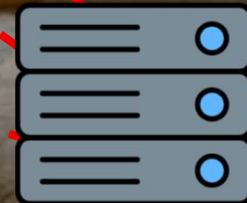


Image by Sora Shimazaki (pexels.com)

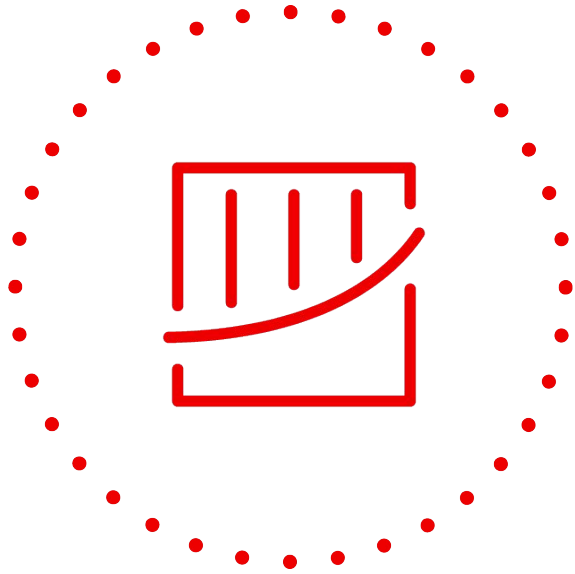




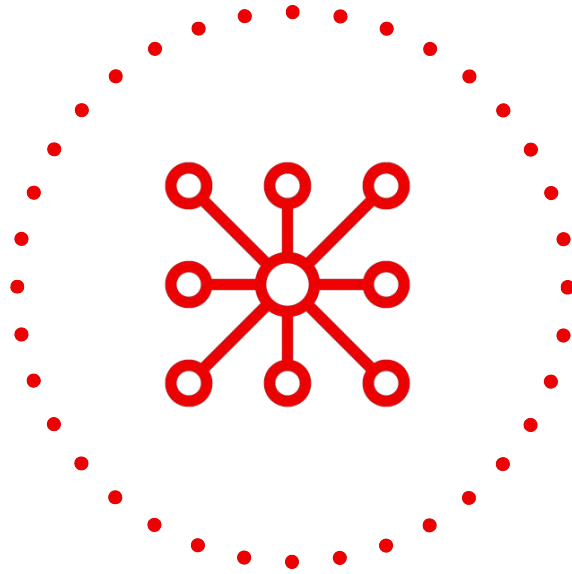
Edge computing



What were the challenges? (in these use cases)



Costs and scale

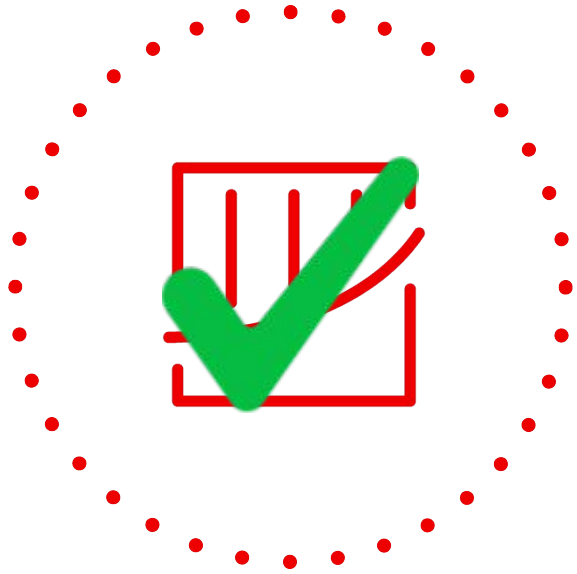


**Network disconnections, delay,
jitter and bandwidth**

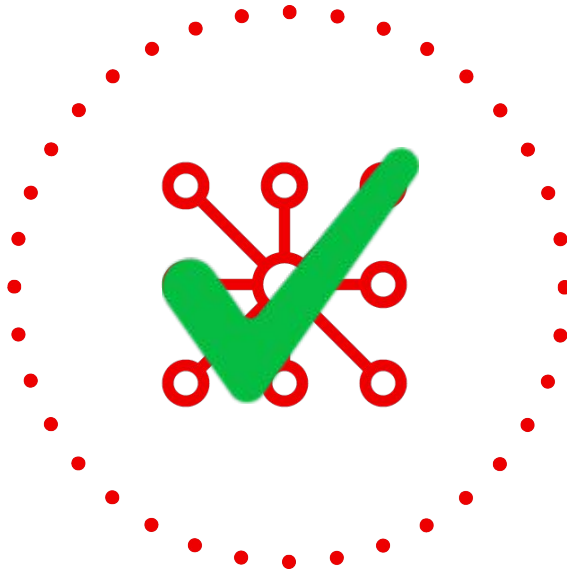


**Privacy, security and
compliance**

How did Edge Computing overcome these challenges?



**Reduced data backhaul and
Data Center bottleneck**



**Improved performance and
Real-time computing**



Local data treatment

What did edge computing do for them?



**Brand protection and
operational costs reduction**



**Operational efficiency
improvement and maintenance
costs reduction**



**Business differentiation and
user experience enhancement**

What did edge computing do for them?



**Brand protection and
operational costs reduction**

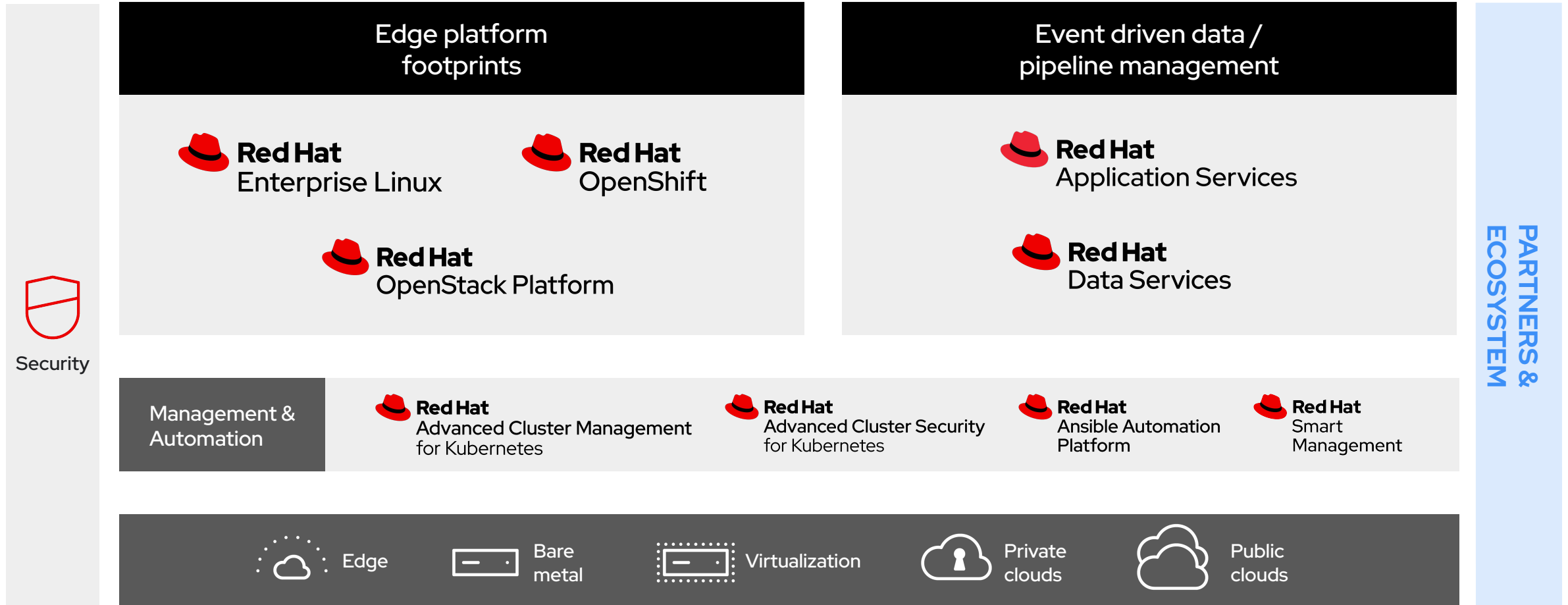


**Operational efficiency
improvement and maintenance
costs reduction**

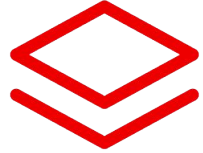


**Business differentiation and
user experience enhancement**

Red Hat Edge Computing portfolio



...and there is where Red Hat can help in Edge Computing

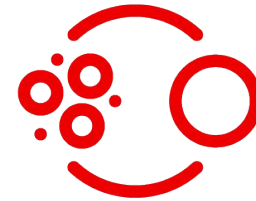


Platforms and portfolio

Powerful building blocks including Red Hat OpenStack® Platform, middleware, storage, and services, with Red Hat OpenShift® and Red Hat Enterprise Linux® in the heart of it all.

..... Open source leadership

Driving development of open standards while providing hardened, fully supported enterprise-grade platforms



Partner ecosystem

Partnering with hardware and software vendors to provide solutions to meet customer needs





Edge computing

Red Hat
Summit

Connect

Thank you



linkedin.com/company/red-hat



facebook.com/redhatinc



youtube.com/user/RedHatVideos



twitter.com/RedHat